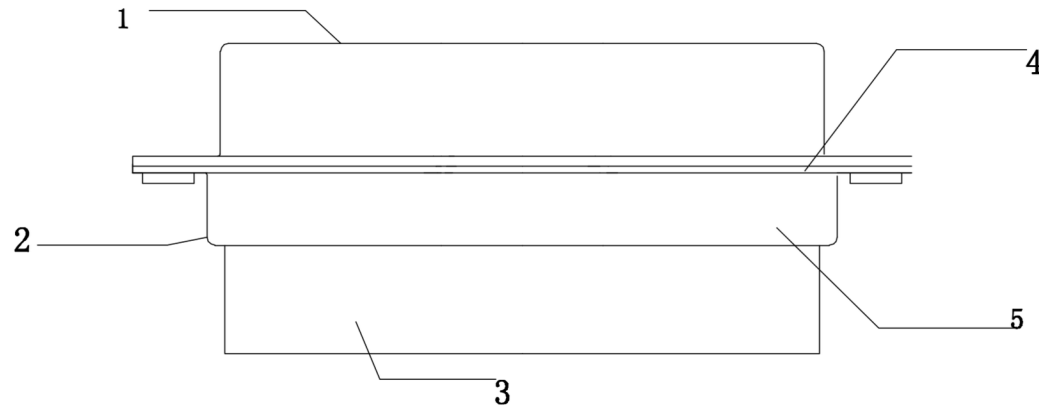
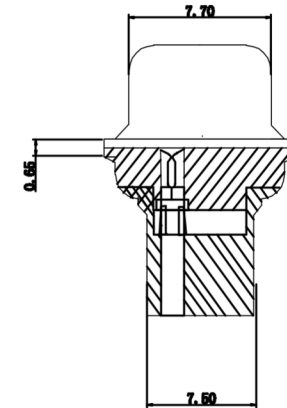
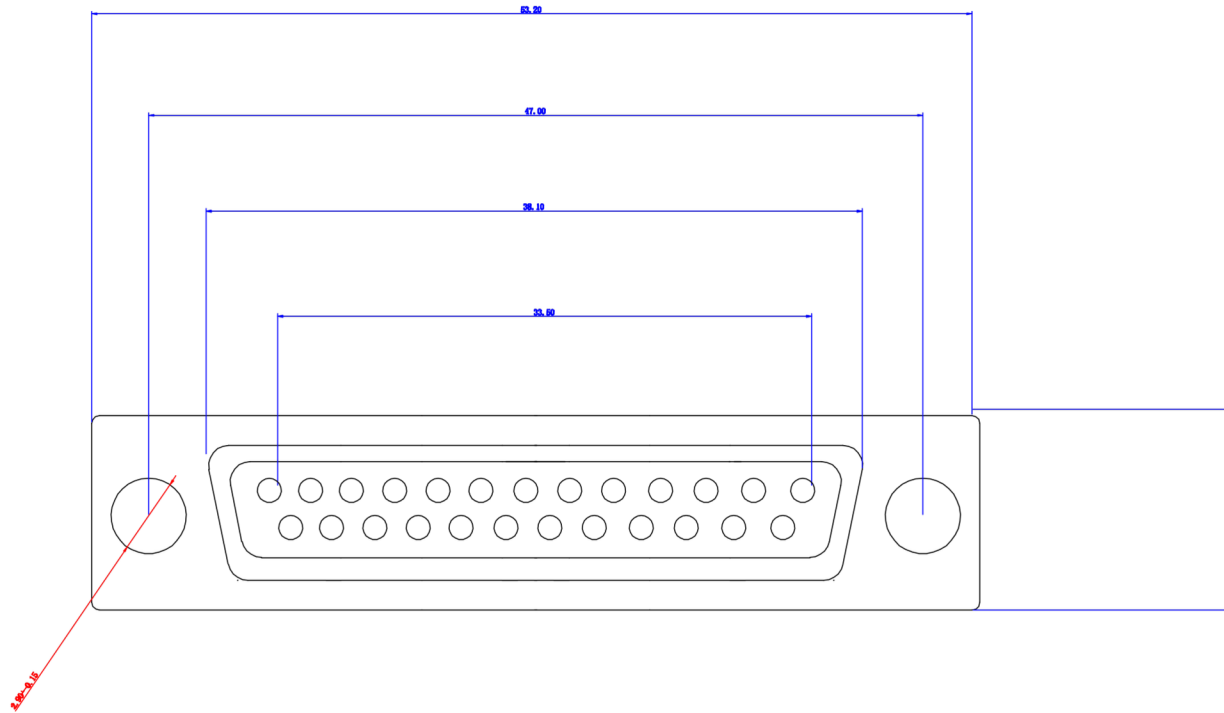


NOTE: ALL MATERIAL COMPLIANT ROHS STANDARD

REVISION INFORMATION			
Rev.	Rev. Date	Modified By	Brief Description



1. PRIDUCT SERIES;DBW SILDER POT
2. CONTACT OPTION;2;RECEPTACCE
3. IRREGULAR CHANGES;0;STANDARD
4. POSITIOINS; DB25PIN
5. INSULTIOIN COLOR;SLUE

## LANshack

Sales@LANshack.com | 888-568-1230

<b>DRAWN BY</b>	<b>DATE:</b> 2013/03/28	<b>DESCRIPTION:</b> DB25 Female Crimp Pin Connector 25 Pin for Custom Pinout
<b>CHECKED BY</b>	<b>SHEET 1 of 1</b>	<b>ITEM NO.</b> LSBL-CON-D25-F-CP
<b>APPROVED BY</b>	<b>SCALE 1:1</b>	<b>REV. 00</b> <b>UNIT: mm</b>

NO.	PART NAME	SPECIFICATION DESCRIPTION	QTY	UNIT
③				
②				
①				